



www.darcmagazine.com

# darc

#28 DECORATIVE LIGHTING  
IN ARCHITECTURE

NOV/DEC 2018

ARIHIRO MIYAKE

MISS WONG RESTAURANT

WIRELESS LIGHTING





## *Five Star Review*

Nexo Luce creates a stunning bespoke lighting scheme for Dubai's Grand Millenium Hotel.

The Grand Millennium Hotel is a five star, 251 room hotel in Dubai, UAE - a new development by RTS Investments, with HLG involved as the main contractor. Having recently opened its doors, the hotel is set to become another iconic hospitality project

contributing to the vibrant landscape of the Business Bay district of Dubai. High-end Italian lighting brand Nexo Luce was responsible for the large-scale bespoke lighting creations at the hotel. One of many projects the company has worked on in the

region, the client's expectation for Grand Millennium was to set a new standard for luxury in the continuously growing Business Bay area. The team opted to do so by bringing the sophistication of Italian design and made-to-measure craftsmanship.





2



Working in close collaboration with local interior designers from DIAR Consult, the Nexo Luce team was strongly inspired by the desert colour palette and curved shapes for the lighting pieces. The atmospheric ambient lighting schemes, in warm amber and copper tones complement the sleek, stylish public and private spaces of the property.

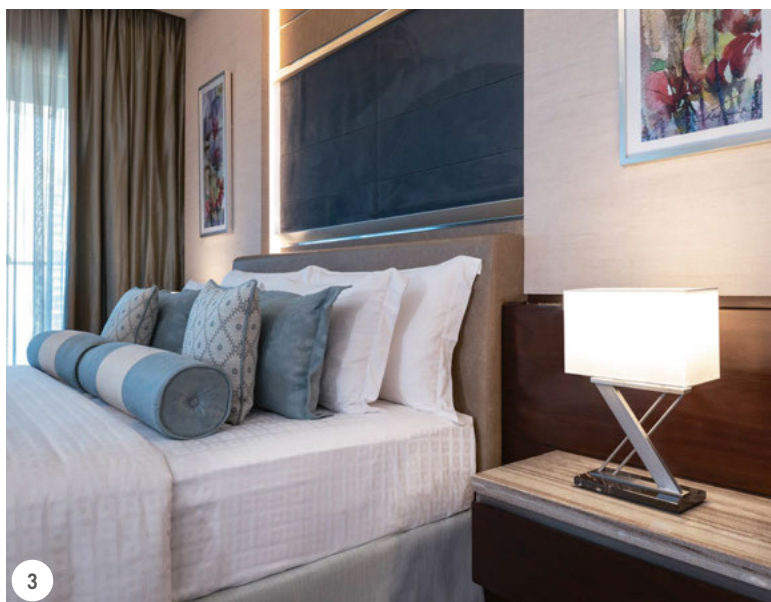
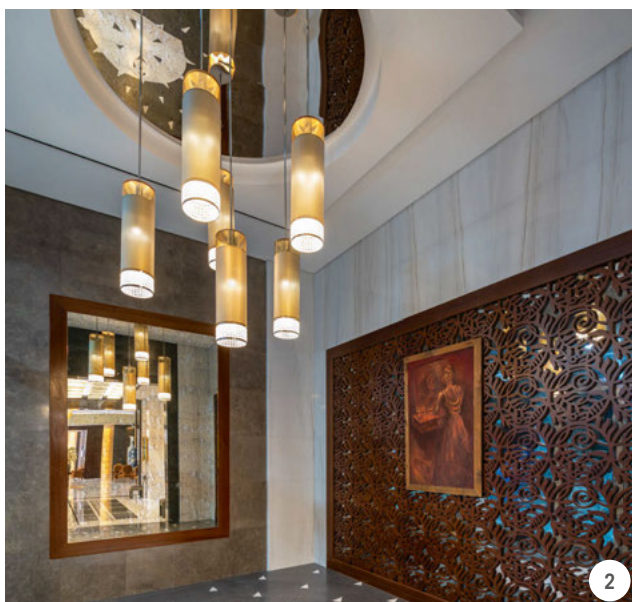
As guests enter, they are greeted by the most impressive light feature in the hotel. From the top of the nearly eighteen-metre high ceiling, a fourteen-metre Murano glass

chandelier spans three floors of the main lobby. Composed of seven structured cage clusters, made of steel wires and covered by a total of 140 individually crafted amber glass leaves, the shape of the leaves is realised in four types. Venetian craftsmen had the challenging task to create every glass leaf by hand while following a strict design pattern, ensuring the leaves for each type were the same.

Lobby lounge lighting includes Nexo Luce designed slimline pendants that make use of polished chrome and glass cylinders in

rich gold, which are suspended around a central sphere. Bespoke lighting continues throughout the public areas, including the bar area, which is adorned with rectangular ceiling mounted lights in stainless steel, and covered in fine Italian fabrics in ivory shades; while the lift corridors are enhanced by wave-shaped complex chandeliers composed of amber frosted and clear glass, with the use of infused golden glitter. For the hotel's ballroom Nexo Luce created a lighting sculpture, another jewel in the collection for guests to enjoy when





visiting the venue. Hues of white and warm colours of the space are juxtaposed by the cool tones of 27 hand-curved chandeliers filling the coffered ceiling of the three interconnected ballroom halls, which gives it a neutral backdrop for various event types. The modernised design of the chandeliers combines the elements of both classic and contemporary styles. Each of the chandeliers is constructed of clear glass tubes assembled in one by a round-shaped mirrored frame, which creates a light refraction effect. Nexo Luce envisioned a modern-day lighting centrepiece that would create the same sense of luxury and grandeur that the ballroom deserves. Once guests make their way up to their room or suite, they find a spacious and relaxing space that makes use of custom

made decorative illuminations, bedside lamps and spotlights, all designed to create a stunning ambiance.

“Nexo Luce turned out to be one of the best decisions made by the Bay Views Hotel project team with regards to lighting,” says Ahmad Sabra, RTS Projects Director and Owner Representative and Chief Architect of the project. “The quality of the products, the design and the techniques of engineering made a great impact on the overall project design and its final look. Another added value was the ability of the Nexo Luce team to respond to our needs quickly and efficiently at all times due to their presence and diverse experience in Dubai and the Middle East.”

[www.nexoluce.com](http://www.nexoluce.com)

### *design details*

**GRAND MILLENIUM, DUBAI, UAE**  
**CLIENT: RTS INVESTMENTS**  
**INTERIOR DESIGN: DIAR CONSULT**  
**LIGHTING SPECIFIED: NEXO LUCE LIRA TABLE & FLOOR LAMPS; COMPASSO TABLE LAMP; CILINDRO VETRO PENDANT; VARIOUS BESPOKE CHANDELIER: SOFFIONE, RIVOLO, FONTANELLA, FONTANA, ONDE, ONDINE**

*Opening spread* 1. Hand-curved chandeliers fill the coffered ceiling of the three interconnected ballroom halls. 2. A 14-metre Murano glass chandelier spans three floors of the main lobby - composed of seven structured cage clusters, made of steel wires and covered by 140 individually crafted amber glass leaves. *This page* 1. The lift corridors are enhanced by the wave-shaped complex chandeliers. 2. The lobby lounge includes slim-line pendants of polished chrome and glass cylinders in rich gold, suspended around a central sphere. 3. The guestrooms and suites feature custom made decorative illuminations, bedside lamps and spotlights to create a stunning ambiance.





OXEN<sub>LUCE</sub>

ITALIAN  
LIGHTING

**NEXOLUCE**  
[nexoluce.com](http://nexoluce.com) | [oxenluce.com](http://oxenluce.com)

FOLLOW US ON

